

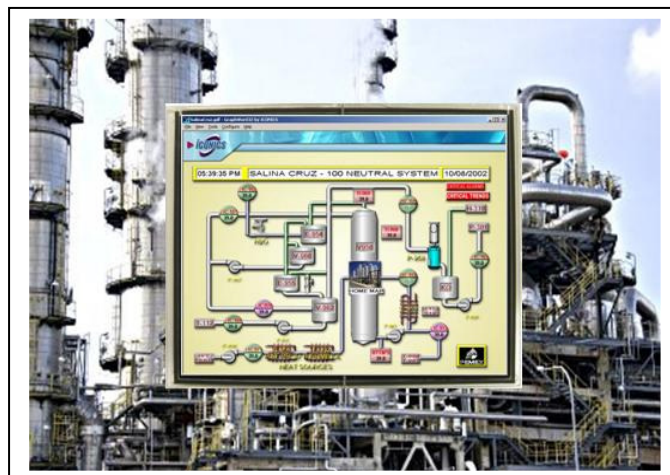
CV150XG01

15.0" XGA TFT LCD

High Bright LED edge lit

Features:

- High bright LED Edge Light
1200 Nits
- Optically Bonded
- Low Power
- Thin Mechanical Package
- Single Channel LVDS Interface
- Wide Temperature Range
- 6 bit color with R-FRC depth; 16.7 M total colors
- Wide Viewing Angle



CV150XG01 is a color active matrix TFT LCD module using amorphous silicon TFT (thin film transistors) as the active switching devices. This module has a 15.0 inch diagonally measured active area with XGA resolution (1024 horizontal and 768 vertical pixel array). The display is equipped with high bright LED edge-lighting, capable of full day light readability at 1000 nits. LED edge lighting ensures high brightness, wide dimming ratios and a very low temperature operation. The display also features optical bonding for very low reflection and a rugged design. Standard bonding comes with 3mm AR coated glass. Other configurations include non-bonded, bonded touch, 6 mm glass, heat or chemical strengthening and EMI filters.

Specifications:

Screen Type (diagonal)	15"	Response Time Tr/Tf (ms)	10 / 20
Voltage (V)	3.3	LED Current & Voltage (mA/V)	800 / 17.5
Display Resolution W*H (dot)	1024 x 768	B/L Power Consumption (W)	14
Dot Pitch W*H (mm)	0.297 x 0.297	High/Low Temp. storage (C)	85 / -30
Viewing Angle (U/D/L/R)	65 / 60 / 70 / 70	High/Low Temp. operation (C)	85/ -30
Luminance Uniformity (%)	85%	Interface	Single channel LVDS
Brightness (nits)	1200	Weight (g)	760
Dimensions W*H*D (mm)	326.5 x 253.5 x 13.0	RoHS	Yes
Contrast Ratio	600 : 1	LED Driver Model No.	CV150D01
Standard Optical Bond	3 mm AR coated	Lighting Type	LED edge lit x 2

